

CM Accelerator

Simplifying Enterprise Configuration Management

Managing how software configuration management is done across the enterprise can be an administrative nightmare. Standardization, consistency and compliance are key elements to managing the enterprise, but require the proper controls to implement effectively. Configuration Management (CM) Accelerator™ from Orasi™ helps organizations put those controls in place by providing a quick and easy way to standardize software CM administration for organizations using Borland®'s StarTeam®.

CM Accelerator extends the capabilities of StarTeam and enables companies to accelerate the creation of StarTeam projects while maintaining consistent folder structures and security settings. It minimizes administration and allows organizations to focus on critical development and business tasks rather than repetitive administrative work.

Project and View Templates

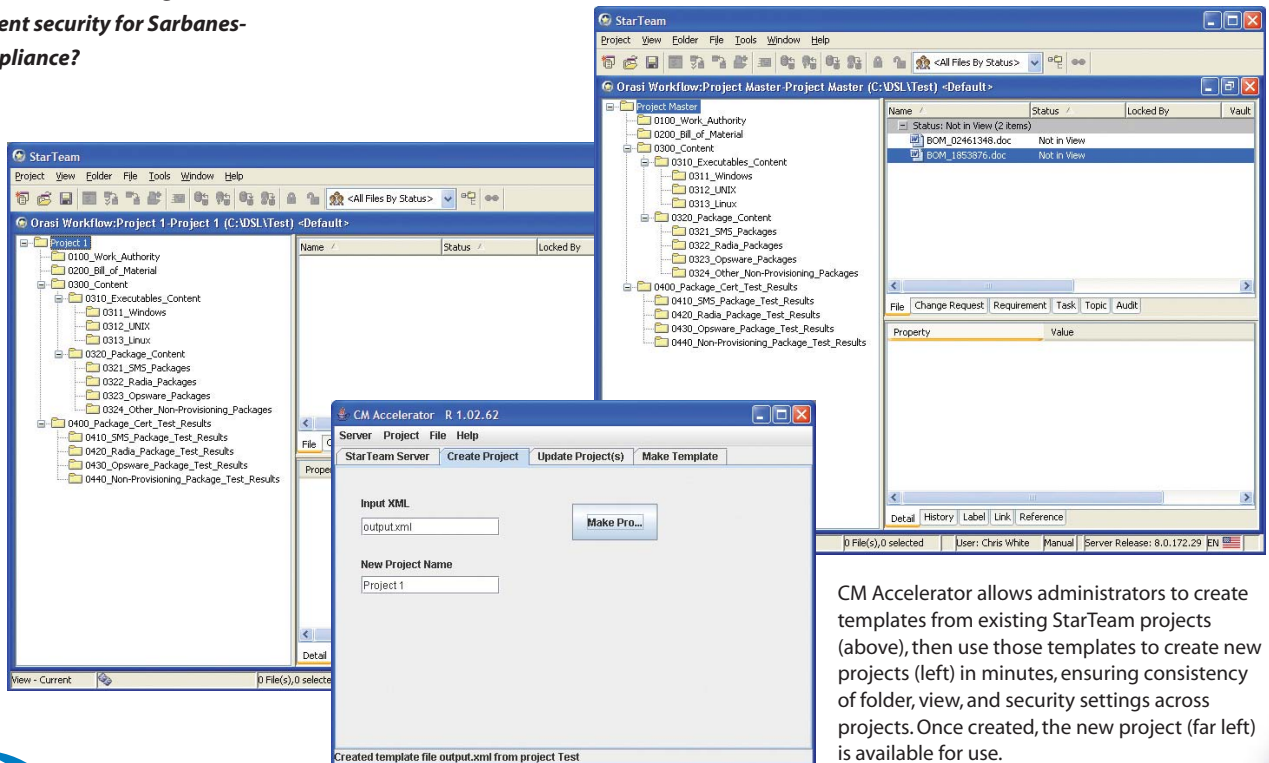
CM Accelerator simplifies the creation of StarTeam projects and views across the enterprise. Instead of requiring the StarTeam administrator to create each project manually, CM Accelerator provides a template that allows for the creation of a standard and reusable project structure, including trees, security, labels, child views, containers, and folder structures. Administrators then can create StarTeam projects in minutes, versus the hours required to create a project manually. Templates also ensure consistency of folder, view, and security settings across multiple projects. The result is a streamlined approach to creating projects and less administrative overhead.

How can you accelerate an enterprise roll-out of StarTeam?

How can you ensure consistency of software configuration management projects across the enterprise?

How can you effectively control software configuration management security settings on a global basis?

How can you efficiently maintain and validate software configuration management security for Sarbanes-Oxley compliance?



CM Accelerator allows administrators to create templates from existing StarTeam projects (above), then use those templates to create new projects (left) in minutes, ensuring consistency of folder, view, and security settings across projects. Once created, the new project (far left) is available for use.

Security

For any organization, data security is a paramount concern, particularly when dealing with standards compliance. CM Accelerator allows administrators to create a comprehensive security structure, as well as create a template of a StarTeam view's security, to ensure compliance with standards such as Sarbanes-Oxley. Many times, administrators set up a complex security structure, only to have it altered without their knowledge. Such changes can greatly affect system integrity and cause an administrative headache. With CM Accelerator, administrators can reset security, including view security, to the baseline structure with a single command, making it easy to maintain system integrity.

Features

- Reduces project creation time from hours to minutes.
- Replicates security user groups, including descriptions, to ensure consistency across projects.
- Allows administrators to reset security with a single command to reduce overhead and ensure compliance with Sarbanes-Oxley or other standards.
- Replicates project structure, including options, process rules, view security, and project security for faster project creation.
- Replicates folders settings—including name, description, working folders, exclude settings, and security—for consistency across the enterprise.
- Includes view settings and labels, including descriptions and security, in project templates.
- Duplicates promotion models to ensure that all project entities across the enterprise follow the same promotional paths.
- Enables auditing of project structure and security changes through reporting.

System Requirements

StarTeam Cross-platform clients 2005, 2005 R2, or 2006

Operating System:

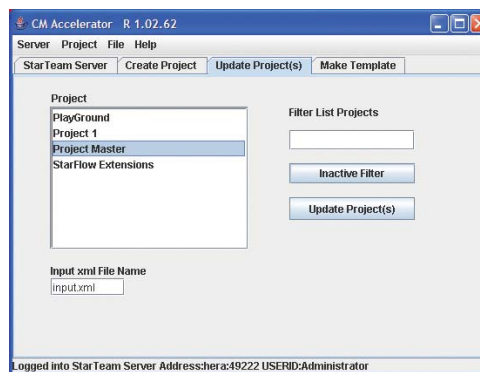
- Microsoft Windows 2000 (SP4)
- Microsoft, Windows NT® 4.0 (SP6a)
 - excludes StarDisk
- Microsoft® Windows® XP (SP2)

CPU: PIII 600Mhz+

Disk: 50 Mb disk space

Memory: 256MB Ram

StarTeam SDK 2005 r2



CM Accelerator allows administrators to reset project settings to their original state with a single command.

Benefits

Reduce project creation time from hours to minutes.

Replicate project settings for consistency across the enterprise.

Duplicate folder structures, including descriptions, for consistent use across projects.

Reset security with a single command to ensure compliance with Sarbanes-Oxley or other standards.

Create security user groups once and reuse across the enterprise to ensure consistency.

Create views from templates to ensure that view security will be consistent across new views.

